



CLOVER CONNECTIONS

Connecting Volunteers, Alumni, and Friends of Montana 4-H

Winter 2020 | www.montana4h.org | www.mt4hfoundation.org

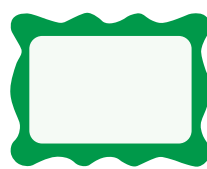
INSIDE THIS ISSUE:



Letter from the
Executive Director



2020 Scholarship
Recipients



Montana 4-H
Awards



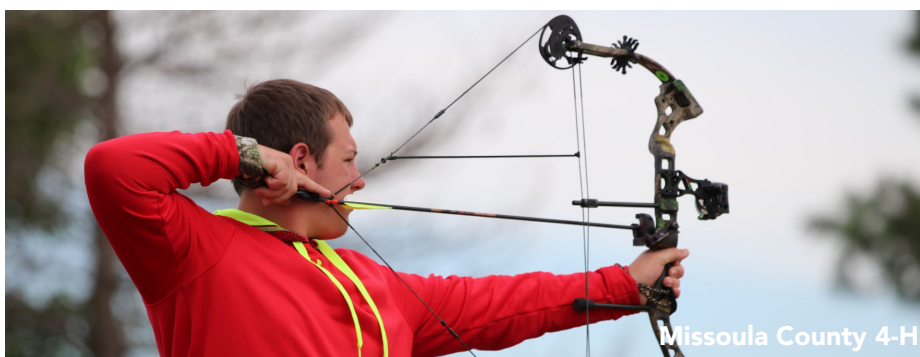
Honor Roll of
Donors

MONTANA 4-H | A VITAL PART OF COMMUNITY

The Montana 4-H Foundation is grateful to have been part of Montana 4-H for over 50 years! In 2020, a survey was conducted to find out how 4-H as an organization affects Montana communities. A Qualtrics survey was distributed to 4-H families and volunteers through 4-H online and to county extension offices.

The research question was: "Is the Montana 4-H program contributing to cohesive communities during the COVID-19 pandemic?" The results showed that the Montana 4-H program contributed to cohesive communities during the pandemic in the following ways:

- Contributing to a Sense of Belonging
- Maintaining Social Ties
- Providing Social Support
- Providing a Sense of Solidarity
- Helping People to Feel Rooted in their Communities
- Maintaining Connectedness



The Montana 4-H Foundation is a 501(c)3 that works in affiliation with MSU Extension, an ADA/EO/AA/Veteran's Preference Employer and Provider of Educational Outreach

BOARD OF DIRECTORS

OFFICERS

Tim Gill, President, Helena
Jordan Stilson, Past President and
Secretary, Lewistown
Katy Proctor, Vice President, Helena
Carrie Taylor, Treasurer, Belgrade

DIRECTORS

Cody Stone, MSU Extension Director
Todd Kesner, 4-H Center Director
Roni Baker, Billings
Emmy Martin, Two Dot
Brent Roeder, Choteau
Monty Lesh, Miles City
Shelby Martinell, Dillon
Cody Solomon, Havre

FOUNDATION STAFF

Sandra Germann, Executive Director
Maureen Moulchin, Office Manager

FOUNDATION OFFICE

406.994.5911

www.mt4hfoundation.org

4hfdn@montana.edu



The Montana 4-H Foundation is a member of Montana Shares! Donations can be designated to 4-H through the Montana Shares workplace giving program.



Sandra Germann

Transitions ...

And with the snap of someone's fingers, we find ourselves transitioned into 2021. Transition is described when used as a noun as "the process or a period of changing from one state or condition to another". This seems fitting since I don't think anyone anywhere can say their life wasn't changed, even drastically, over these past 12 months. The year unprecedented in so many ways is behind us and a brand new year is unfolding.

In brief overview, 2020 had its challenges but it wasn't without successes either. 4-H staff, volunteers and youth were presented with many new learning opportunities; some of which stretched us to create programs in new ways, even virtually. But we did it. We learned things that we never imagined we would learn. Seeing an adult log in to a computer to mentor a youth member via a Zoom call might not have been something even imagined in the past but we know it not only can be done, but is being done by people all around the state. And, while some statewide events were produced virtually this past year, such as Montana 4-H Congress and Ambassador Fall Training, others such as the State 4-H Horseshow and Working Ranch Horse Finals were able to be held safely in person. Thank you to all the staff, volunteers, parents and youth who worked tirelessly to make all these programs (and more) happen and who learned the methods needed to continue to present numerous opportunities to our Montana 4-H youth at a time that it was needed most.

The Montana 4-H Foundation is transitioning into the new year with a board of directors 13 strong - including an experienced executive committee, 4 new directors in 2020 and 2 youth members. There will be even more funding budgeted for program support, grants and scholarships offered in 2020-2021 than in past years thanks to the generous and unwavering support of our 4-H donors.

In light of this period of transition, we are excited that the Foundation will also be welcoming a new executive director in the near future. I will be retiring in early 2021 once a new director is established. Words cannot express my gratitude to be able to work with so many fine people in extension and with our 4-H donors and friends. I thank you all for making my work so special these past 12+ years and I look forward to crossing trails with many of you in the future.

Thank you for your continued support of Montana 4-H.

Let's make it a great year!
Sandra

Sandra Germann, Executive Director

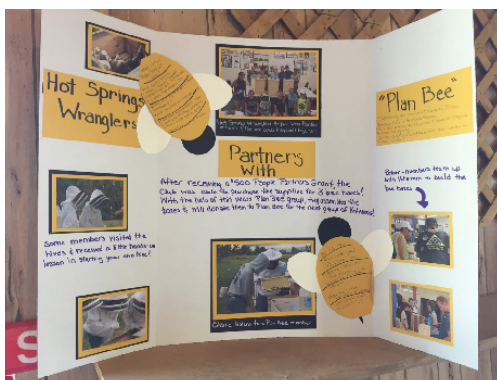


18 USC 707

PEOPLE PARTNER GRANTS | 4-H in Action

Each year the Montana 4-H Foundation awards People Partner Grants to provide financial support to 4-H clubs and individuals for programs and projects that enhance the quality of living for people in their communities. Each application is eligible for up to \$500, and these grants are funded annually by an endowment set up by **Geraldine Fenn**. Interested in learning more about the application process? Visit the Foundation's website to learn more: mt4hfoundation.org/grants

These grants provide 4-Hers across the state with the opportunity to make a tangible difference in their communities by removing the monetary barrier and allowing a wide variety of projects to take root. Sometimes, these projects will serve as a 4-Her's first introduction to service projects and further instill a desire to make a difference in their communities and throughout their lives. Check out some of the highlights from this year's People Partner Grants!



*Hot Springs Wranglers
Demonstration Board for Plan Bee*



*Rowdy Ropers 4-H Club Fleece
Blankets for HEART Locker*



*Puptown Wranglers add Picnic
Table at Carter Co. Fairgrounds*

Hot Springs Wranglers | Sanders County

This project was led by Claire and Elena McAllister. The People Partner Grant was awarded to build bee hive boxes for Plan Bee. Plan Bee is an organization for Veterans, specifically for disabled veterans suffering from PTSD. The organization offers classes to learn how to become bee keepers and each veteran receives their own hive.

"The Veterans really enjoyed working with the young men and women from the Hot Springs Wranglers 4-H Club ... It was nice to see their enthusiasm and share in our love of Bees!" –Tammy King McAllister

Junior Leaders 4-H Club | Wibaux County

The Junior Leaders 4-H Club was awarded a People Partner Grant to improve and beautify the "W" located in the Wibaux County Park. Club and community members assisted the Wibaux Garden Club in clearing out the W and adding planters and pavers to ensure the longevity of project.

Northern Lights 4-H | Valley County

The Northern Lights 4-H Club received one of the Montana 4-H Foundation's People Partner Grants to enhance their community park, primarily by painting some of the equipment. This project benefits all who enjoy the park, largely the local school as the park serves as their main playground.

Clever Clover 4-H Club | Glacier County

As any pet owner knows, the pets are part of the family. That sentiment is no different for Hadley Barbie a member of the Clever Clovers who requested a grant to renovate the Marias Fair 4-H dog arena. With the grant secured and a number of private donations to account for the difference, they were able to update and refinish the bleachers at the arena as well as tear down the old fencing and install a new dog arena.



WAY TO GO MONTANA 4-Hers!

SCHOLARSHIP RECIPIENTS



Watson Snyder
Teton County
Cedric & Elfriede Maurer
Memorial



Andee Baker
Stillwater County
Farm Credit



Kyler Maharg
Lewis & Clark County
MT Wheat & Barley



Blayne Hubing
McCone County
MT Wheat & Barley



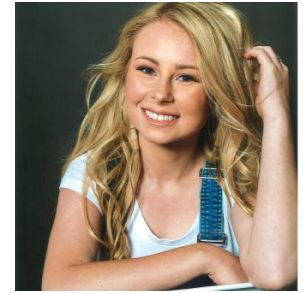
Taylor Noyes
Broadwater County
Nutrien Ag (Northern
Seed)



Claire Bagnell
Missoula County
Murdoch's Ranch & Home



Mesa McKee
Lake County
Murdoch's Ranch & Home



Keely Drummond
Cascade County
Murdoch's Ranch & Home



Kara Klietz
Missoula County
Murdoch's Ranch & Home



Sophie Kolb
Missoula County
Murdoch's Ranch & Home



Chay VanDyke
Prairie County
Anton and Helga
Sundsted Pioneer



Coalter Littrell
Glacier County
Hubbard / Westfeeds /
Alltech



Jessica Horan
Fergus County
MT Farm Bureau



Andrew Ferrat
Broadwater County
MABA / MGEA



Tyler Noyes
Broadwater County
MT Meat Processors



Nathan Hill
Broadwater County
Steer In Trailer Sales

The Montana 4-H Foundation serves as a non-profit organization supporting the continued development and growth of the statewide 4-H program. The mission of the Montana 4-H Foundation is to help 4-H youth by raising private funds, managing financial resources and partnering with the MSU Extension Service to fund educational opportunities for Montana 4-H youth, volunteer leaders and staff.

2020



Morgan Stevenson
Powell County
Steer In Trailer Sales



Kyla Johnston
Flathead County
Steer In Trailer Sales



Megan Bittner
Gallatin County
Steer In Trailer Sales



Brock Jones
Ravalli County
Steer In Trailer Sales



Krista Schott
Stillwater County
Carson Christensen Memorial



Natalie Sloan
Judith Basin County
First Security Bank Fdn



Kelli Ober
Cascade County
Bud Dawson Livestock



Jessica Pauley
Powell County
Bud Dawson Livestock



McKenna Quirk
Missoula County
Barbara Edens Memorial



Macie Martinell
Beaverhead County
W. Doyle Stocks Memorial



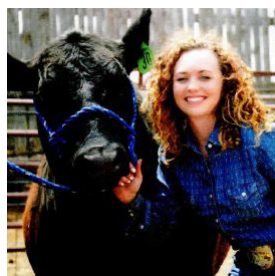
Angelina Toth
Blaine and Hill Counties
Bob and Margaret King Memorial



Allyson Young
Richland County
Douglas A. Dear Memorial



Treven Maharg
Lewis & Clark County
MT 4-H Council



Jenna Wacker
Musselshell County
Wilcox Family



Jaden Good
Chouteau County
MT 4-H Shooting Sports



Makayla Paul
Cascade County
N.A. Jacobsen



Gage Bloesser
Richland County
Miller

On behalf of Montana 4-H and the 2020 scholarship recipients, we would like to extend a heart-felt **thank you** to all of the scholarship donors for Montana 4-H. These funds, along with any gift to the Montana 4-H Foundation, are a true investment in tomorrow's leaders and an acknowledgement that Montana's youth have limitless potential.

MONTANA 4-H HALL OF FAME

2020 INDUCTEE TO THE HALL OF FAME

This award honors individuals such as community leaders, alumni, former or current directors or former or current staff for their outstanding lifetime efforts to generate opportunities for 4-H youth by giving of resources, volunteering or community support of 4-H. This year the Montana 4-H Foundation is proud to welcome Walt Egged of Big Horn County to the Hall of Fame!

Walt Egged has been a long time supporter of Montana 4-H and while we were unable to celebrate in person this year, it is an absolute privilege to welcome Walt into the Montana 4-H Hall of Fame. Walt led the Sunshine Aggies 4-H Club of Big Horn County for over 40 years with his wife Karen. In that time, there is no doubt that Walt had a profound and lasting impact on the 4-Hers with whom his path has crossed. In memory of his wife, Karen, Walt continues to support Montana youth with a \$1,000 scholarship in her name. In addition, Walt has served on various committees and the leaders council over the years. Walt is a strong believer and supporter of the 4-H Exchange Trips as well as the Citizenship Washington Focus (CFW) experience! Thank you Walt Egged for a lifetime of giving back to Montana 4-H.

"The man is absolutely amazing and is a blessing to everyone."
- 4-H Alumni



OUTSTANDING 4-H ALUMNI

The Montana 4-H Foundation recognizes 4-H alumni who have made a significant impact on 4-H by promoting, supporting and enhancing the benefits of youth and adult involvement in the program or a specific 4-H project area.



Cory Arntzen

- 8 Years as a 4-H Volunteer
- Involved in livestock and leadership projects for over 10 years.
- Club Leader and Officer of the Leaders Council
- Assists with project committees and the Fair Board



Jacob Eckman

- 24 Years as a 4-H Volunteer
- Was a member of the Kitchen and Korral 4-H Club as a youth member
- Club and Project Leader
- Chaperone, Ring Announcer, Buyer, Camp Helper, Fundraising Participant, and so much more!



Sharla Sackman

- 21 Years as the Prairie County Extension Agent
- Past Board Member of the Montana 4-H Foundation
- Planned Countless 4-H Camps, fairs, district and state events, workshops and 4-H activities!

MONTANA 4-H AWARDS (cont.)

Outstanding Lifetime Volunteer Awards

The Outstanding Lifetime Volunteer Award recognizes individuals who have served as 4-H volunteers for more than 10 years.



Vicki Olson (pictured)

- District 2 Outstanding Lifetime Volunteer of the Year
- 23 years as a 4-H Volunteer
- Leather Project and Club Leader



Nancy and Lauris Byxbe

- State Outstanding Lifetime Volunteer of the Year
- District 7 Outstanding Lifetime Volunteer of the Year
- 35 years as a 4-H Volunteer
- Club Leaders for Kountry Kritters
- Key volunteers for Communication Day, Chairmen in the small animal barn for Montana Fair
- They loved the 4-H members and Montana Fair became a second family.

Volunteer of the Year Awards

The Volunteer of the Year Award recognizes individuals who have served as 4-H volunteers for less than 10 years.



Shelly McPhee

- State Volunteer of the Year
- District 6 Volunteer of the Year
- 8 Years as a 4-H Volunteer
- Club Leader and Teen Leadership Project Leader
- Council President, Chaperone, Food Booth Manager, and more!



Amber Nentwig

- District 5 Volunteer of the Year
- 5 Years as a 4-H Volunteer
- Club Leader and Archery Project Leader
- Council President, serves on various county committees and helps with the food booth at fair



Larry Hendrickson

- District 2 Volunteer of the Year
- 6 Years as a 4-H Volunteer
- Shooting Sports Leader
- Helps with Fundraising, finding meeting locations and taking inventory of supplies.

Without the incredible support of volunteers and donors, the work of Montana 4-H would not be a success. Because of your generous and continued support, Montana 4-H is able to provide support to 20,000 4-H members and 4,000 volunteers! Our partnership with MSU Extension and the 4-H Center for Youth Development allows youth and leaders the opportunity to participate in educational, social, and often life-changing experiences that mold them into caring and contributing citizens and community leaders. **THANK YOU!**

MONTANA 4-H HORSE SHOWS

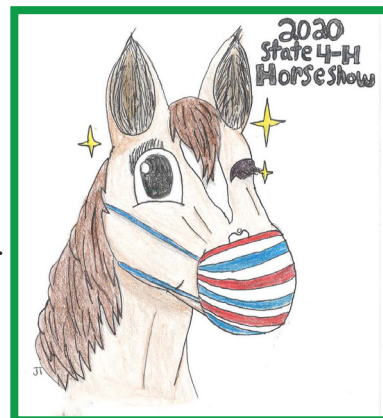
While so many events had to be cancelled this year, Montana 4-H was fortunate to be able to host both the Montana 4-H Horse State Show and the Working Ranch Horse Finals in 2020.

Working Ranch Horse Finals

The Montana 4-H Working Ranch Horse Finals is a heritage-based program designed to pass on traditional practices of safe livestock handling from horseback. In a world where ranches are moving toward automation and the use of machinery (such as four-wheelers). This project aims to teach and preserve those skills and traditions that are being lost.

4-H State Horse Show

The Montana 4-H State Horse Show provides 4-H horse project members the opportunity to test their skills alongside their peers from across the state in a competitive setting. Classes are offered for riders of nearly every skill level and include many aspects of the 4-H horse project. The 4-H Horse Project provides 4-Hers with the opportunity to handle, care for, ride or drive horses amid 10 different projects.



Pro Tech Steel
Freedom Outdoor Structures
Dr. Jerry Billquist
Dillon Jaycees
Stockman Bank
Open Box Ranch
Zoetis Company
Walter and Vicki Johnson
Associated Veterinary Services
Montana Farmers Union Insurance
Bison Ford
Moore Farmer's Oil
Glennie Ranches
Big Sky Prorodeo Roundup
Committee
Cowan Select Horses, LLC
Yellowstone County 4-H Council
Fink Quarter Horses

Working Ranch Horse Sponsors

State Horse Show Sponsors

Wealth Solutions of Montana, LLC
2K Development, Inc.
Gelhaus
Beaverhead County
Lewistown Insurance Agency, Inc.
Anonomous
Fallon County 4-H Council
Judith Basin Co. 4-H Council
Rosebud County
Fergus County
Moore Farmer's Oil
Stockman Bank
Northwest Farm Credit Services
Parker Horse Company CBA
Billings
Associated Veterinary Services
First Bank of Montana
Big Sky RV
Montana Quarter Horse Assn
Edward and Joanne Lamb
Sanders County 4-H Council
Yellowstone Country Food
& Beverage

Walter and Vicki Johnson
Spika Design & Manufacturing
Cascade County 4-H Horse Leaders
CMG Engineering
Yellowstone County 4-H Council
Marias Fair Horse Committee
Down T Livestock, LLC
Jay and Edyna Shaw
Stillwater 4-H Council
Flathead 4-H Foundation
Rennies Horsehoeing LLC
2nd Chance Show Apparel
Cowpoke Feed Store
Heart K B38
Murdoch's
Quarter Box 3 Performance Tack
Rands Custom Hats
Rustic Décor
Schneider's Saddlery
Shipton's Big R
Showtime Show Clothing
Yellowstone Economic Associates
Yellow 8 Ball Customs



Montana 4-H Ambassador Program

Ambassadors are youth that are engaged in **LEADERSHIP**, **SERVICE** and **PROMOTION** of the Montana 4-H Program. A 4-H Ambassador is an official envoy, an authorized representative of our Montana 4-H Program.

Ambassador Purpose:

- Represent 4-H in a public relations role.
- Promote 4-H with potential members, parents and the general public.
- Help plan, implement and evaluate 4-H events.
- Organize 4-H promotion activities.
- Develop personal leadership skills and self-confidence.
- Encourage financial support for 4-H.



2020-21 Montana 4-H State Ambassadors pictured (left to right): Bella, Claire, Megan, Riley, and Emmy

A Message from Emmy Martin | State 4-H Ambassador Officer

Hello! The ambassador team, pictured above, is hard at work this year to bring as many opportunities to the members of 4-H statewide! The team has introduced two new programs, virtual Leadership Trainings and the virtual Ambassador Academy. With these two trainings, members of the state are learning more about themselves and leadership through team lead activities as well as activities led by Kent Julian, a well-known author and public speaker. We plan to continue these trainings until further into the spring and summer. We are currently preparing for the Legislative Breakfast to be held January 19th, which will be virtual this year. We are super excited to see more of the members throughout the rest of our trainings and for the Legislative Breakfast!

Funding ur Future

Thank You for Investing in Montana 4-H Youth!



Name: _____

Address: _____

E-mail: _____

Phone: _____

☐ Single Gift - **OR** - ☐ 4-H Sustainer (Monthly Giving)

☐ Check Payable to MT 4-H Foundation Enclosed

☐ Credit Card Payment:

Card Number: _____

Name on Card: _____

Expiration: ____/____ CVC Code: _____ Billing Zip Code: _____

☐ I authorize the Montana 4-H Foundation to withdraw \$_____ from my bank account on the 10th of each month beginning _____ (month). *Voided check enclosed.

Return this Card with Donation to: Montana 4-H Foundation
Box 173580 • Bozeman, MT • 59717-3580

HONOR ROLL OF DONORS

OCTOBER 1, 2019 – SEPTEMBER 30, 2020

Without the generous support of our donors and sponsors, we would be unable to provide such incredible opportunities for Montana's youth. We would like this opportunity to say **THANK YOU** for your support of Montana 4-H. For a full report of donors, please see MT4HFoundation.org.

We have tried to be as accurate as possible in listing donors, but apologize if we overlooked anyone or listed only one person when gifts were given jointly. Gifts of over \$100 are recorded, bold indicates **400 and 500 Club Members**.

EMERALD CLOVER **\$10,000 AND UP**

Anonymous
Kathryn J Rinehart Trust
Gianforte Family Charitable Trust
Arthur M Blank Family Foundation
Murdoch's Ranch and Home Supply, LLC
MidwayUSA Foundation
Alice Ackerman

PLATINUM CLOVER **\$5,000 - \$9,999**

MT Agriculture Business Association
Davis Elen Advertising
Gallatin 4-H Unlimited
Ravalli County 4-H Advisory Council
National 4-H Council Operation Account
Wells Fargo Foundation
Murdoch's Ranch & Home Supply

GOLD CLOVER **\$1,000 - \$4,999**

Wibaux County 4-H Council
Dillon Jaycee Rodeo
Roosevelt County 4-H Council
Beaverhead County 4-H Council
Richland County 4-H Council
Freedom Outdoor Structures
Pro-Tech Steel
Lois Jean Harrison
Valley County 4-H Council
Montana Farm Bureau Foundation
AGR-Alpha Gamma Rho Philanthropy
Enviromin INC
J.P Morgan Philanthropic Trust
Lehrkinds Coca-Cola Bottling
Northern Seed LLC
Sweet Grass County 4-H Council
Janice Peace
Matt Jones (Steer In Trailer Sales & Wink, Inc.)
Saddle Stars 4-H Club
Vigilante Electric Cooperative, Inc.
Wheatland County 4-H Council
Pondera County 4-H Council
Sanders County 4-H Council
Missoula County 4-H Council
Bosch, Kuhr, Dugdale, Martin,
& Kaze, PLLP
Hill County 4-H Council

Wheatland County Clerk and Recorder
Daniels County 4-H Council
Fergus County 4-H Leaders Council
Yellowstone County Extension Office
Blaine County 4-H Leaders Council
Teton County 4-H Council
Flathead County 4-H Foundation
Yellowstone County 4-H Council
Musselshell-Golden Valley Co. 4-H Council
Allied Investment Advisors, LLC
First Bank of Montana
Northwest Farm Credit Services
Stockman Bank
Beaverhead County Extension Office
James "Dave" and Catherine Phillips
Richard & Karen Powell
Kristin Robinson
The Dan & Mary Beth Ewen Trust

SILVER CLOVER **\$500 - \$999**

Four H Leaders Council
Randall & Sheryl Knowles
Montana Shares
Greg and Laureen Lackman
(Greg Lackman Farms Inc.)
Marsha Goetting
Stand and Martha Klaumann
Kenneth and Mary Beth Walsh
Carol Martinell
Minott and Jan Pruyn
Hertha Lund
Lois Weber
Betty McCoy
Steve and Gayle Muggli
Michael Capra
C. Perry and Anne Anderson
Donald and Carol Roberts Foundation
Russell and Karin Ludeman
Earl and Bertha Pruyn Foundation
Keith and Kristine Arntzen
The Breawold Fund

BRONZE CLOVER **\$100-\$499**

State of Montana
Craig and Wanda Pinnow
(Bracket Butte Ranch)
Jane Finlay (Finlay Lumber)
Gary DeFrance (Harrison Elevator Co.)
4M Weed and Pest Control
Jim and Laura Giers (Montana Vintage Arms and
Valley Machine & Engineering)
Joyce Milesnick and Susan Sager
Friend Anonymous

Betty Aye
Jeff and Donna Bader
Donna Baeth
Nikki Bailey
Todd and Kate Banner
James D Bennett
Nicole Bergen
Bison Ford
Bracket Butte Ranch
Martha Brandon
Justin Bras
Robert and Sheri Brastrup
Larry Brence
David Brink
Broadwater County 4-H Leaders Council
Carol Bronson
Clyde and Carol Byerly
Gary and Sherry Carlson
Cascade County 4-H Leaders Council
Mike and Patricia Cavey
Chouteau County 4-H Council
Circle Rock Homes, LLC
Ken and Myleen Clawson
CMG Engineering Inc
Marian and Steven Combellic
Susan Debree
Ruth and Thomas Drummond
Kamirra Dunbar
Timothy and Tori Dwyer
Brian Dyk
Erlonna Erickson
Gary and Elaine Evertz
Fannie Mae
Fink Quarter Horses
Freeman & MacLean, P.C.
Chuck and Laura Fricke
Garfield County 4-H Council
Gateway Simmental, LLC
Frank & Margaret Gebhardt
Sandra Germann
Wayne Gibson
Robert Gilbert
Tim and Carol Gill
Glacier County Extension Office
Glass Specialist of Billings Inc
Desirae Gouger
Goulding Creek Silver Blades 4-H Club
H Bar R Ranches (Bill and Ramona Holt)
Sandra and Colie Hamilton
Jess Hansen
Margie Hansen
Robert & Helen Hanson
Harrison Elevator
Stephanie Hedrick
John and Kendra Heiken
Karen Hollandsworth
Peter Jenningo
Jorgen & Sharon Jensen
(Sheridan Arms Apartments)
Shirley T. Johnson
Larry Kaufman
Michael and Amy Kennedy
Ross and Susan Kesler
Todd and Lisa Kesner



MEMORIALS & TRIBUTES

OCTOBER 1, 2019 – SEPTEMBER 30, 2020

The following gifts were given in honor of the people listed. Our youth need the skills and confidence that 4-H experiences provide and the character and leadership the 4-H community builds. You can honor your loved one's legacy by contributing to the Montana 4-H Foundation in their memory and ensure that 4-H and positive youth development is available across the state for generations to come. Bold indicates **400 and 500 Club Members**. Visit MT4HFoundation.org for more information.

BRONZE CLOVER CONT.

Lewis and Tracey Krutzfeldt
Edward & Joanne Lamb
Connie Larson
Lazy U Cross Ranch
Lewistown Insurance Agency
Lincoln County 4-H Council
Dora and Michael Lindner
Thomas & Carol Lorang
John and Juli Thurston
Christy Todd
University of California Revolving Fund
Valley Machine & Engineering, Inc.
Charles and Margery Watkins
Daniel and Rita Watson
Westmoreland Rosebud Mining LLC
Wibaux County
Madison-Jefferson County Extension
Gerald and Sharon Marks
Kay Martin
Shelby Martinell
Bernice Mason
Mary McHugh
Phyllis and Kenneth McKamey
(McKamey Ranch Co.)
McLean, Younkin & Willett, PLLC
Jerry & Leslie McMillen
Eloise McNally
Frank and Charlene Mehling
Mile High United Way
John Miller
Shelley Mills
Montana 4-H Council
Montana Grain Growers Association
Montana Livestock Ag Credit, Inc.
Charles and Jane Morgan
Morrison-Maierle, Inc.
Musselshell-Golden Valley County Extension
Northern Broadcasting System Inc
Wesley M Oja
Vanessa and Ward Olson
Matthew and Rosetta Otto
Linda Ortner
Park County 4-H Council
Parker Horse Company

Cheryl and Joseph Pauli
Donald Popelka
Powder River Rising Stars 4-H Club
Katy Proctor
Guy Rainville and Carol Jean Lassila
Kent Rasmussen
William Rather
Cindy and Chris Reiquam
Rennies Horse Shoeing
George Rice, Jr.
Toni Rice
Brent and Tracie Marie Roeder
Walter and Shirley Rolf
Georgia Rose
Rosebud-Treasure County 4-H Council
Hugh and Debbie Ross
Carl Rostad
Charles and Shirley Rust
Sharla and Bob Sackman
Colleen M Schaak
Denis and Scott Seilstad
Edyna Shaw
Shell Oil Company Foundation
Sheridan County, Montana
Snowy Mountain Lock & Door
Codi Sorensen
Carol & Tom Sparks
Stillwater County Clerk & Recorder
Jordan Stilson
Carl H Sturgeon
Sunrise 4-H Club
T.S. Miller Inc.
Teton County
John and Juli Thurston
Christy Todd

TRIBUTES

Verlin and Diana Koenig – HP "Pat"
McVay's 100th Birthday

CONTRIBUTIONS | IN MEMORY OF

Joyce Milesnick and Susan Sager | Toni Thompson
Ross and Susan Kesler | Helen Rice
Michael and Catherine Odden | Helen Rice
Allen and Cynthia Rice | Helen Rice
Judy and Leonard Ober | Helen Rice
Robert and Lucille Rice | Helen Rice
Brodie and Diane Gollehon | Helen Rice
Kenneth and Mae Rosman | Jeanne Arnott Englebriston
Ravalli County 4-H Advisory Council | Jack Eden
Randall & Sheryl Knowles | Dolly Dwyer
Timothy and Tori Dwyer | Dolly Dwyer
Charles and Jane Morgan | Dolly Dwyer
Franklin and Jean Schoonover | Dolly Dwyer
Julie & Rodney Pribyl | Dolly Dwyer
Thomas & Carol Lorang | Dolly Dwyer
Carol & Ronald Shipley | Dolly Dwyer
Karin and Russell Ludeman | Dolly Dwyer
William and Gloria Miller | Charles Gaugler
Wilma Younkin | Bob Yandon
Wayne Gibson | Bob Ross
Verlin and Diana Koenig | Betty Neumiller
David and Janet Hauptman | Esther McDonald
Patrick and Cari Verlanic | Esther McDonald
Jim and Carrie Bignell | Esther McDonald
William and Candy Richter | Marion O'Connell
Tom and Helen Carey | Larry Martin
Linda Ortner | Warren and Betty Don Ross
Roger & Juanita Hearst | Roger Hearst
Charles and Shirley Rust | Earl Peace
Wayne Gibson | Earl Peace
Karin and Russell Ludeman | Earl Peace
Charles and Shirley Rust | Don Baldrige
Susan Melaney | Tim Tew
Wayne Gibson | Sherman John Smith
Shirley T. Johnson | Barbara Wuest, Pat Rogers, Jim Tomlinson
Ravalli County 4-H Advisory Council | Ashley Smartt
Betty McCoy (Gooch Hill House) | Ted Carter, Larry Hansen, Billie Thomas, Jan McDonald, John Tomaskie, Al Lien and Nora Lukin
Richard & Karen Powell | Richard Powell
Charles and Shirley Rust | Leroy Delger
Ada Montague | Daniel Charles Jackson
Carol Bronson | Ruth Drummond
Verlin and Diana Koenig | Gregg Carlson
Martha Brandon | Esther McDonald
James D Bennett | Elbert Kirsich
Lois Jean Harrison | Donald Rudolph and Avis Jamieson
Ken and Myleen Clawson | Samuel Thomas McGowan
Ravalli County 4-H Advisory Council | Jack Ward and John "Bill" Sperry
Marsha A. Goetting | Sherry Bergland
Charles and Shirley Rust | Sherry Bergland
Kenneth and Mae Rosman | Lonny Valentine, Landon Cox and Jeanne Arnott Englebriston
Ina Ann and Robert Thomsen | Dan McLean
Berna M Smith | John Smith





111 Taylor Hall
PO Box 173580
Bozeman, MT 59717-3580



DONOR SPOTLIGHT



GIANFORTE
Family Foundation

**AMB
WEST**

PHILANTHROPIES



Montana
Livestock
Ag Credit, Inc.



Stockman Bank
Member FDIC

Northwest
FARM CREDIT SERVICES

ALLIED
INVESTMENT ADVISORS

**MONTANA
GRAIN
GROWERS
ASSOCIATION**



Gilhausen
Family
foundation



**VIGILANTE ELECTRIC
COOPERATIVE**
A Touchstone Energy® Cooperative



ALPHA GAMMA RHO
MONTANA STATE UNIVERSITY
Nurture. Grow. Give. Repeat.

Thank you to the Montana 4-H Youth Leadership Sponsors and Statewide Program Sponsors! Your support helps ensure that Montana 4-H can continue to grow the true leaders of tomorrow!

Interested in sponsoring? Contact the Foundation at 406.994.5911 or send an email to 4hfdn@montana.edu

Montana 4-H Program/Project Sponsors

Montana Farm Bureau

Gavel Games, Livestock Judging, Public Speaking

Northern Broadcasting

Prepared Speech Winner

Jean Harrison

Quilting

Alice Ackerman

Horse Judging, Horse Skill-a-Thon

Tim & Carol Gill

Livestock Judging

Montana Wheat & Barley Committee

Stir Ups

Wayne Gibson & Gibson Family

Demonstrations, Fashion Review